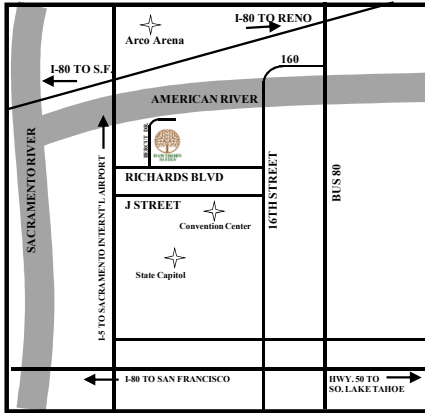


HAWTHORN[®]

SUITES BY WYNDHAM

321 BERCUT DRIVE
SACRAMENTO, CA 95814
TEL: (916) 441-1200 FAX: (916) 444-6530

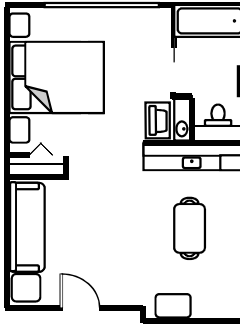


DIRECTIONS

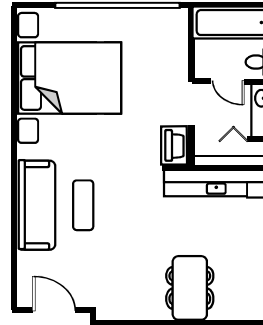
From Airport: Exit airport and follow I-5 South to Richards Blvd. Exit and turn left. Turn left on Bercut Drive, hotel on right.

From Downtown: I-5 North. Exit Richards Blvd. and turn right. Proceed into left lanes and turn left onto Bercut Drive, hotel on right.

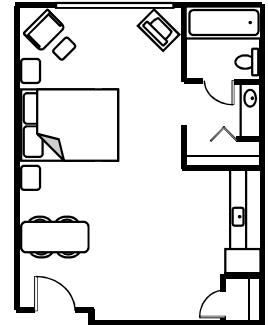
ACCESSIBLE STUDIO UNIT



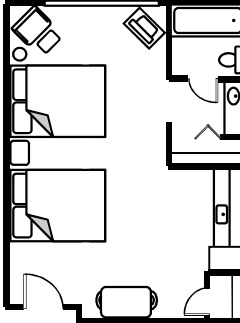
STUDIO UNIT



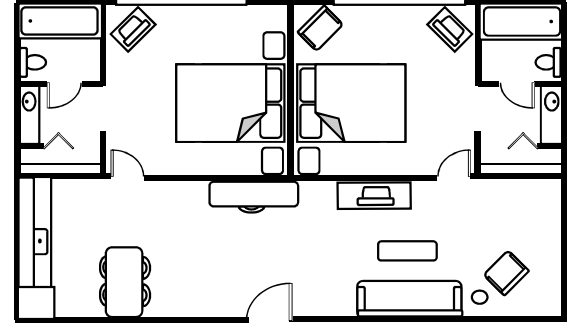
STUDY STUDIO UNIT



DOUBLE QUEEN STUDIO UNIT



TWO BEDROOM UNIT



ACCOMMODATIONS

- 271 studio and two bedroom suites, most with fully equipped kitchens
- Well-lit over-sized work desk
- Voice mail, dataports, dual-line speaker telephones
- Full size iron, ironing board, hair dryer and coffee maker
- Satellite TV with premium channels, pay-per-view and video player
- For service exceeding your expectations, Hawthorn suites proudly offers reliable in-room communications from AT&T. So you'll stay better connected to family, friends and work anywhere, anytime.

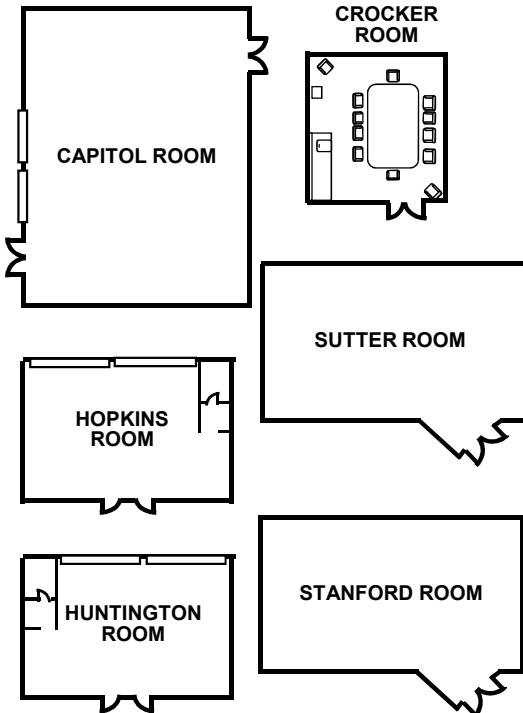
SPECIAL SERVICES

- Complimentary full breakfast buffet served daily
- Complimentary Evening reception Mon-Thurs.. 5:00pm-6:30pm
- On-site business services
- Complimentary High Speed Wireless Internet Access
- Same day dry cleaning services
- Outdoor heated pool and whirlpool
- 6,000 square feet of flexible meeting space
- Full food & beverage catering services available
- Complimentary airport Shuttle
- Complimentary Downtown and Old Sacramento Shuttle
- Complimentary parking
- Guest laundry facilities
- Convenience store/Business Center
- Complimentary USA today
- Exercise facility
- Sports court
- Grocery Shopping

ATTRACTIONS

- Old Town Sacramento 1 mile
- Railroad Museum 1 mile
- State Capitol 2 miles
- Convention Center 2 miles
- Cal Expo 5 miles
- Arco Arena 2 miles
- Sac. Int'l Airport 7 miles
- Raley Field 2 miles
- CSUS 5 miles

Meeting Rooms



*Audio & Visual Equipments Also Available.

MEETING ROOM INFORMATION	Square Feet	Theater	Rounds	Classroom 6x18Table	Classroom 6x30Table	Hollow Square	U-Shape	Conference
Capitol Room	1470	175	100	75	64	56	40	40
Sutter Room	1260	150	80	56	48	48	33	30
Stanford Room	1260	150	80	56	48	48	33	30
Huntington Room	708	60	30	24	16	30	25	22
Hopkins Room	708	60	30	24	16	30	25	22
Crocker Room	285	Board of Directors Permanent Set Up for 10 to 12 People						

WEBSITE: <http://www.sacramentohawthorn.com>